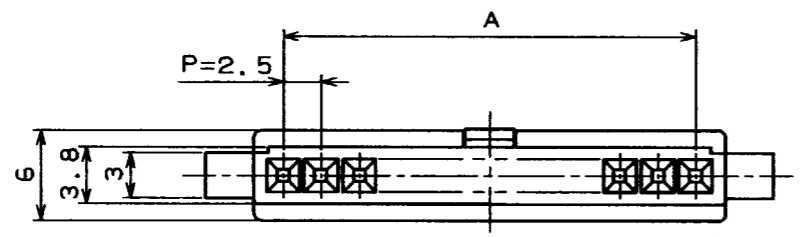
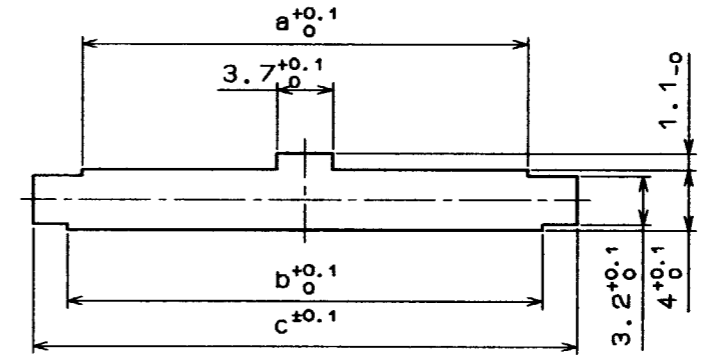


Feb.1.2022 Copyright 2022 HIROSE ELECTRIC CO., LTD. All Rights Reserved.
In case of consideration for using Automotive equipment / device which demand high reliability, kindly contact our sales window correspondents.

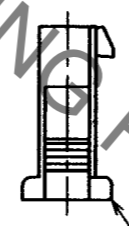
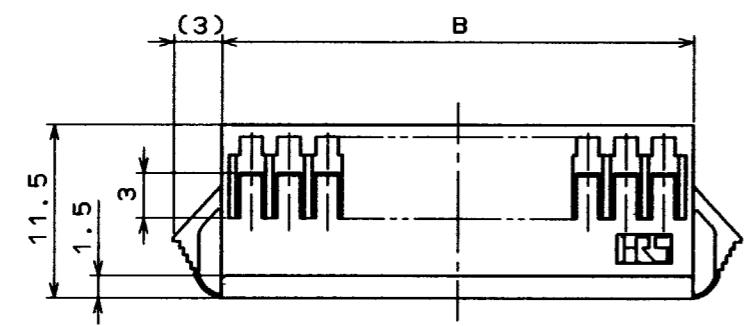
COUNT	DESCRIPTION OF REVISIONS	BY	CHKD	DATE	COUNT	DESCRIPTION OF REVISIONS	BY	CHKD	DATE



< PANEL CUTOUT >



PLEASE NOTE THAT A DIMENSION (PANEL THROUGH HOLE) VARY WITH THICKNESS OF PANEL WHEN YOU MOUNT DF1B EXTENSION SOCKET TO THE PANEL. AND PLEASE PROCESS THE PANEL THROUGH HOLE WITHOUT BURR.



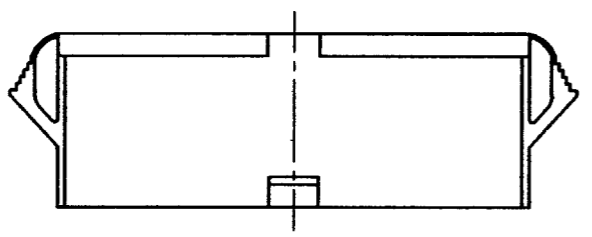
1

CONTACT NO. 1

NUMBER OF CONTACTS



CAVITY NO.



HRS NO	PART NO.	A	B	PANEL CUTOUT				
				a	b	PANEL THICKNESS		
						0.5-1.2	1.3-1.6	1.7-2.0
CL541-0320-8	DF1B-2ES-2.5RC	2.5	6.5	4.7	6.7	10.8	11.3	12.0
0321-0	3	5.0	9.0	7.2	9.2	13.3	13.8	14.5
0322-3	4	7.5	11.5	9.7	11.7	15.8	16.3	17.0
0323-6	5	10.0	14.0	12.2	14.2	18.3	18.8	19.5
0324-9	6	12.5	16.5	14.7	16.7	20.8	21.3	22.0
0325-1	7	15.0	19.0	17.2	19.2	23.3	23.8	24.5
0326-4	8	17.5	21.5	19.7	21.7	25.8	26.3	27.0
0327-7	9	20.0	24.0	22.2	24.2	28.3	28.8	29.5
0328-0	10	22.5	26.5	24.7	26.7	30.8	31.3	32.0
0329-2	11	25.0	29.0	27.2	29.2	33.3	33.8	34.5
0330-1	12	27.5	31.5	29.7	31.7	35.8	36.3	37.0
0331-4	13	30.0	34.0	32.2	34.2	38.3	38.8	39.5

NO. MATERIAL FINISH, REMARKS		1 POLYAMIDE	NATURAL (WHITE) UL94V-0		
CODE NO. (OLD)		NO. MATERIAL	FINISH, REMARKS		
DRAWN		DESIGNED	CHECKED	APPROVED	RELEASED
M. Gotoh		M. Gotoh	J. Oma	H. Yamamoto	
'94. 3. 24		'94. 3. 24	94. 3. 25	94. 3. 25	
SCALE	DRAWING NO.	PART NO.			
2 : 1	EDC3-160093-02	DF1B-*ES-2.5RC			
UNITS	HRS HIROSE ELECTRIC CO., LTD.	CODE NO.	0320	8	1
mm		CL541-	0331	- 4	1