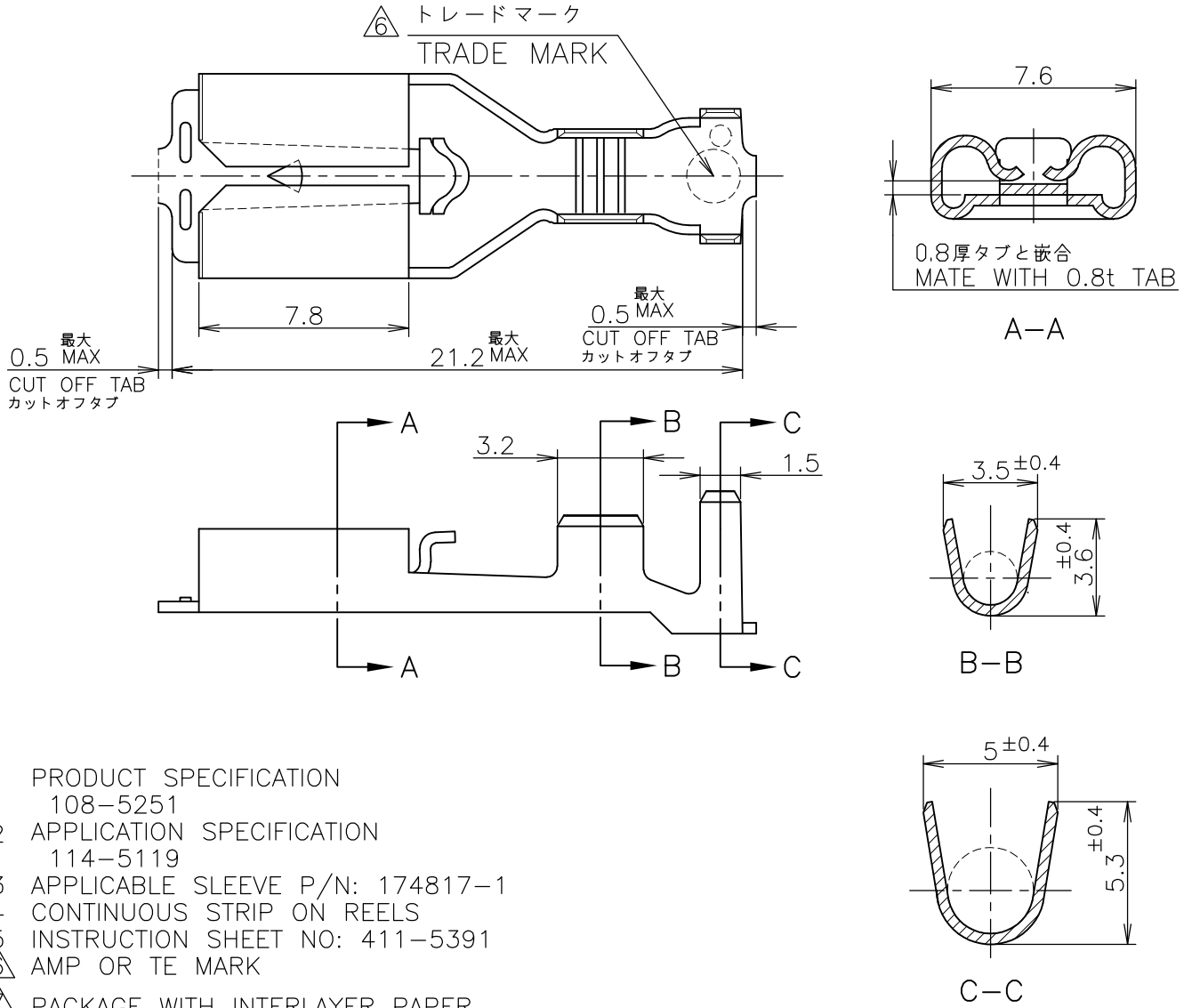


LOC J	DIST /	REVISIONS 変更			DATE	DWN	APVD
P	LTR	DESCRIPTION			18MAR16	HG	TD
	F2	REVISED PER ECR-16-003912					



911590-1	175023-1	PRE TINNED BRASS	①175022-2
911590-1	175023-1	PRE TINNED BRASS	175022-1
—++—	HAND TOOL NO.	L.P.NO.	MATERIAL
			P/N

WIRE RANGE 抱合電線断面積	AWG #18-#14 0.76~2.09 mm <sup>2</sup>	INSULATION DIA 被覆外径	2.2~3.4 mmφ
-----------------------	--	------------------------	-------------

DIMENSIONS:  
単位: 耗  
mm

TOLERANCES UNLESS OTHERWISE SPECIFIED:  
一般公差

0 PLC ±

1 PLC ± 10 ≥: ±0.2

2 PLC ± 30 ≥ > 10: ±0.25

3 PLC ± 100 ≥ > 30: ±0.3

4 PLC ±

ANGLES ± 3'

DWN Y.ABE	06SEP2010	MATERIAL 材料 表参照 SEE TABLE
CHK T.TSUZAKI	06SEP2010	 TE Connectivity
APVD T.MASUDA	06SEP2010	
PRODUCT SPEC 製品規格 注1 参照	NAME 名称 250 SERIES POSITIVE LOCK-EX REC. 250 シリーズ ポジティブ ブロッカー-EX リセプタクル	
APPLICATION SPEC 取付適用規格 注2 参照	DRAWING NO 番号 175022	
WEIGHT	SIZE A4	CAGE CODE 00779
CUSTOMER DRAWING		RESTRICTED TO

SCALE 尺度	4:1	SHEET 1 OF 1	REV F2
-------------	-----	-----------------	-----------

RELEASED FOR PUBLICATION  
MAY 1, 1999.

ALL RIGHTS RESERVED.

THIS DRAWING IS UNPUBLISHED.

© COPYRIGHT 1999 By -